

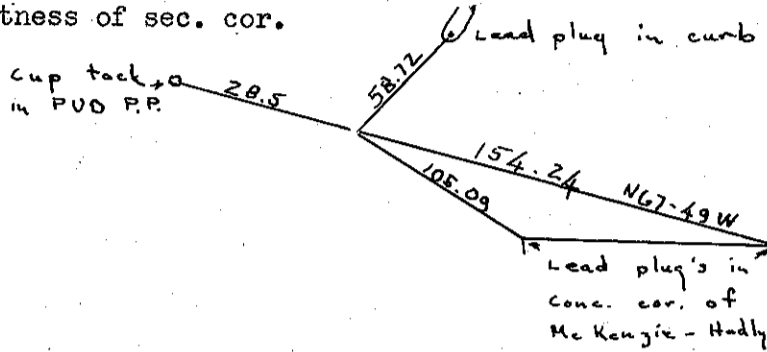
CHAINS
 1/4 cor on
 N. side
 of sec 11
 T3S R10W

Found old corner post marked 1/4 ~~XXXXXX~~ which was set by U.G. Jackson in 1913. Old Trees in bad condition. Set new corner post and made new BT's

18" hem N35W, 11.0 ft.
 14" hem N67E, 19.0 ft.

In the presence of W.E Anderson and Francis L. Smith, July 15, 1950

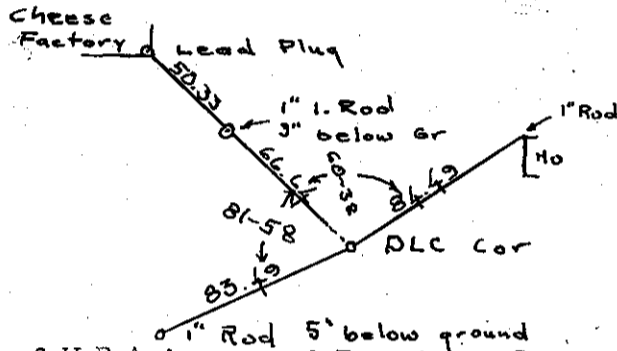
Witness of sec. cor.



In the presence of W. E. Anderson and Francis L. Smith, 1950

Witness of S.E. cor of Edrick Thomas D. L. C.

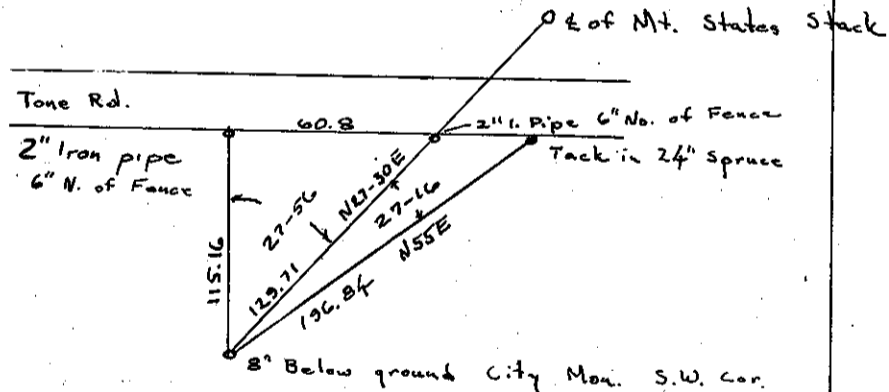
S.E. cor
 Edrick
 Thomas
 D.L.C.



In The presence of W.E Anderson and Francis L. Smith, 1950

Dug and uncovered monument, made witnesses asin drawing

S.W. cor
 of Till.
 City
 T1S R10W



In the presence of W. E. Anderson and Francis L. Smith, 1950

Sec Cor
 16,17,20,21
 T2S R9W

Rewitness of sec cor at Fossbine place on Tillanook River. Found rotten remains of large spruce (BT) which is the only large spruce in vicinity, distance and bearing check with old fence line also, in relation to river, considering slight bank wash by river.

New BT's are:

14" alder N10W, 21.2 ft.
 Lead plug in rock, N32E, 44.0 ft.
 Root of 48" spruce, S34W, 50.4 ft.

In the presence of W.E. Anderson and Francis L. Smith, 1950